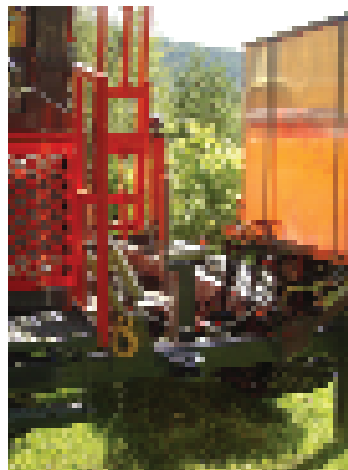
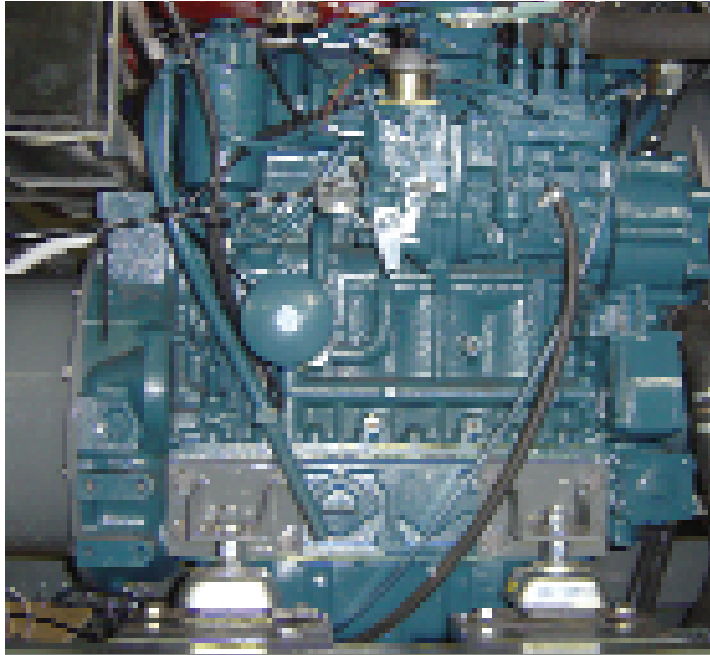
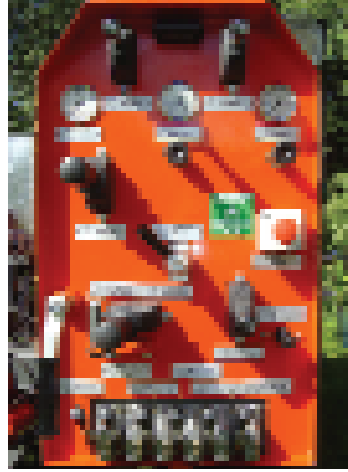


# NEPRO

## NESTESTOG PRODUKSJON



# NP 2000 IS THE DRILLING RIG WITH THE MOST EQUIPMENT AS STANDARD



- With our solid frame you will get a stable and robust construction.
- Nestestogs triangular bracket and hydraulic feeder support allows the feeder to go all the way down onto the frame. This makes our drilling rig suitable for all kinds of horizontal drilling.
- Our rig is being delivered with a choice of steel or rubber belts.
- NP 2000 has a simple and manageable frontpanel, with only pilot and direct-acting valves, NO ELECTROVALVES.
- Hydraulic joystick in the frontpanel for operating the belts.
- Protected support legs.
- Sepson 4 tonnes main winch.
- Dynaset injection pump for water.
- Electricity and welding generator.
- 500 liter aluminium watertank.

## BY CHOOSING NP2000 YOU WILL GET

- An easily manageable and compact rig with all service points accessible.
- LS-hydraulics from Sauer Danfoss ensures that the energy produced is used for drilling and not to create unnecessary overheating.
- All this combined with a fuel-efficient Kubota 96hp motor secures that the use of fuel is as low as possible.
- The NP 2000 industry leading design and top quality components are manufactured to fully comply with the ISO certification ensuring that the rig works day after day, year after year under the most demanding working conditions.

# SPECIFICATIONS NP 2000

## MEASUREMENTS AND WEIGHT

Width	2250 mm
Length with feeder, down	6050 mm
Height with feeder, down	2200 mm
Center height with feeder i transport position	1100 mm
Weight	6700 kg
Diesel tank	92 liter
Drilling oil tank	43 liter
Hydraulic oil tank	165 liter

## UNDERCARRIAGE

Caterpillar 307c with steel or rubber belts

Belt width	450 mm
Belt lenght cc	2002 mm
Ground pressure	0,41 kg/cm <sup>2</sup>

## POWER PACKAGE

Kubota V 3800DI-T	
Engine power	71 kW
Max rpm	2600 rpm
Pump Sauer Danfoss, JRR 060B variable	48-156 l/min
Battery	2 x 105 Ah
El monitoring, 2 emergency stops and error indicators	

## FEEDER

Feeder lenght	4000 mm
Feeder force, maximum	4300 kg
Pull up, maximum	6500 kg
Fast feeder	1,00m/sec
Fast pull up	0,63m/sec
Drilling steering	220 mm
Top winch	250 kg

## ROTASION UNIT

Torque	2300/4600 Nm
Rotasion speed	0-90 rpm
Spindel thread	API 2 3/8"

## MISCELLANEOUS

Pipe rack capacity	64 pc Ø76
	49 pc Ø89

All specifications are for guide purposes only. Contact Nepro for further information.

Nestestog Production AS is a small business located in Vinje, Norway. The company was started by the previous director and senior technician from Nemek in 1993. The company produces drilling rigs.

The NP 2000's high standards are well recognised within the Scandinavian drilling rig industry and you will find many similar features on some of the rigs of our competitors. This itself is proof that the construction and solutions are successful.

For further information please contact.

Nestestog Produksjon AS  
3890 Vinje  
Norway

Telephone +47 35 07 22 05  
Ånund Nestestog mobile +47 95 93 88 60  
Knut Olav Edland mobile +47 95 29 20 85  
Fax +47 35 07 22 25  
e-mail [nepro@online.no](mailto:nepro@online.no)  
[www.nepro.no](http://www.nepro.no)